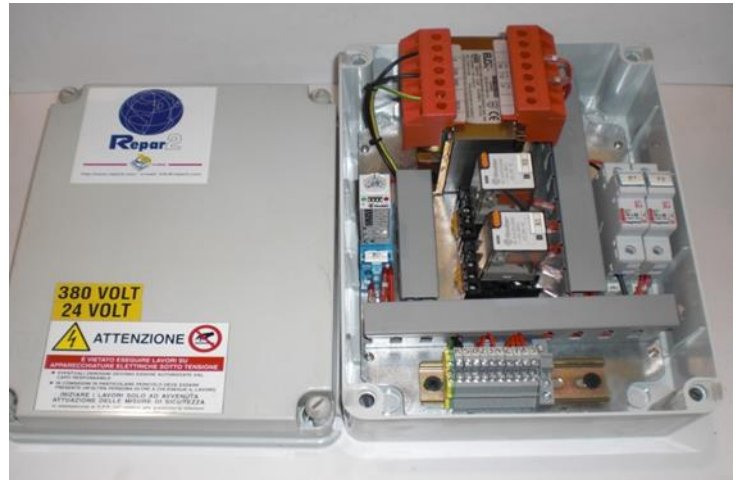


SINCE 1970

Repar2

On guards where the closing and opening movement is actuated by a sliding movement, (Ex. MAJOR-TAsliding-PR) you need to put a micro with electro-magnet with separate actuator - Micro 005 see above. The micro allows the opening only after a time previously established by the timer installed in our:

Box -Code MIC-BOX 001



SINCE 1970

Repar2

DI CARNOVALI MARCO OTTAVIO
VIA AMBROGIO COLOMBO, 176
21055 GORLA MINORE (VA) – Italy
Tel +39 0331 465727 Fax +39 0331 465728
e-mail info@repar2.com www.repar2.com